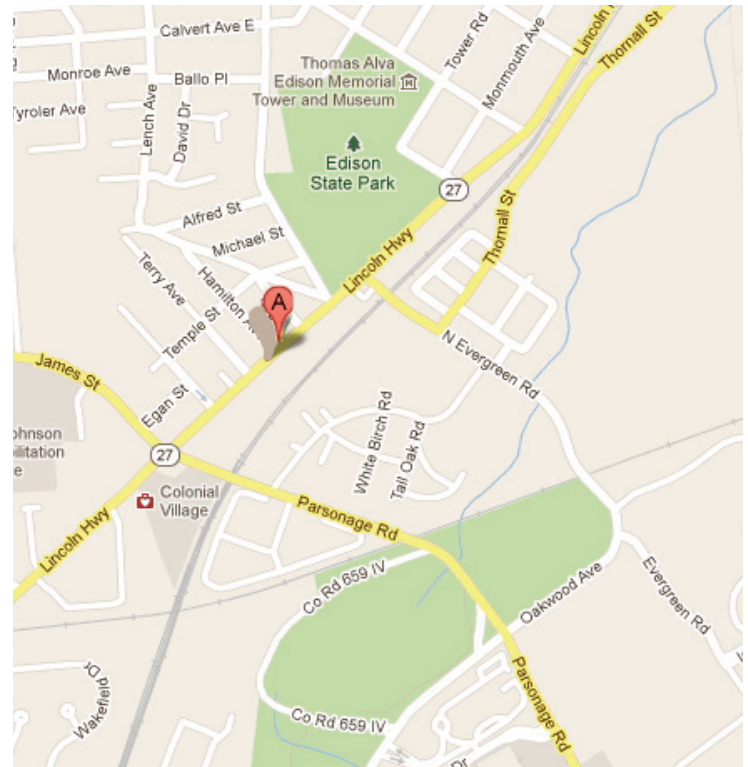


Mixed Use Building for Lease or Sale

82 Route 27
Lincoln Highway Edison, NJ
Middlesex County



±5,814 - 3,306 SF RETAIL + (2) ±1,200 SF APARTMENTS

For Sale: \$899,000

Details: Ideal for Owner Occupant. Solid Brick Construction, 2 Stories. Separately Metered Utilities. Terrific Visibility, Corner of Lincoln Highway and Harvey Street

Taxes: ± \$14,000

Block: 643.B Lot 6.A

Lot Size: 100 x 80 (.1837 Acre)

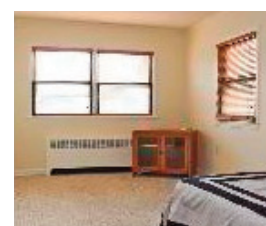
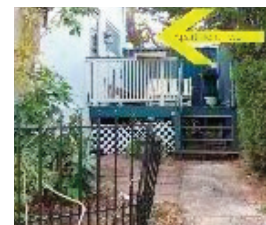
Traffic Count: ± 32,800 Cars

Zoning: OS.2 (office/services)

Household Income: \$101,280 with in 3 miles

Permitted Uses: Medical, Dental,
Professional Office, Banks

Minutes from GSP, MetroPark,
NJ Turnpike, Route 287, JFK Medical Center,
Raritan Center, and Menlo Park Mall.



Contact: **Neal Heinze**
Licensed Real Estate Broker

tel: 201.988.1990
email: westfieldcommercial@gmail.com
web: www.westfield-commercial.com

WestfieldCommercial